

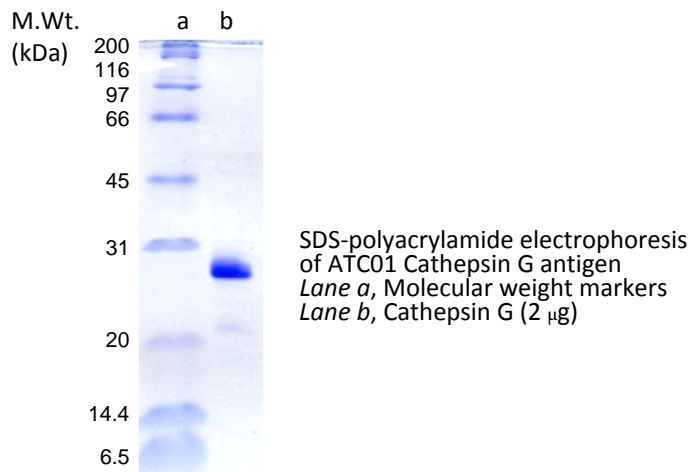
Product datasheet:

Cathepsin G

Overview

| | |
|-------------------------------|---|
| Product name: | Cathepsin G |
| Alternative names: | CG |
| Uniprot: | Accession number P08311 |
| Description: | 27 kDa |
| Source material: | Human neutrophils |
| Purity: | >90% by SDS-polyacrylamide electrophoresis |
| Purification: | Purified using conventional chromatography procedures |
| Clinical applications: | Elevated cathepsin G activity has been reported to occur in bronchiectasis and adult periodontitis. Autoantibodies to cathepsin G have been reported to occur in patients with systemic lupus erythematosus, systemic sclerosis, ulcerative colitis, Crohn's disease, primary sclerosing cholangitis and malaria. |

Images



References

Watorek W. et al. (1988) Neutrophil elastase and cathepsin G: structure, function, and biological control. *Adv. Exp. Med. Biol.* **240**:23-31
 Hof P. et al. (1996) The 1.8 Å crystal structure of human cathepsin G in complex with Suc-Val-Pro-PheP-(OPh)₂: a Janus-faced proteinase with two opposite specificities. *EMBO J.* **15**:5481-91
 Polanowska J. et al. (1998) Specificity of human cathepsin G. *Biochim. Biophys. Acta* **1386**:189-98
 Korkmaz B. et al. (2008) Neutrophil elastase, proteinase 3 and cathepsin G: physicochemical properties, activity and pathophysiological functions. *Biochimie* **90**:227-42
 Sepper R. et al. (1995) Presence, activities, and molecular forms of cathepsin G, elastase, alpha 1-antitrypsin, and alpha 1-antichymotrypsin in bronchiectasis. *J. Clin. Immunol.* **15**:27-34
 Tervahartiala T. et al. (1996) Cathepsin G in gingival tissue and crevicular fluid in adult periodontitis. *J. Clin. Periodontol.* **23**:68-75
 Tamiya H. et al. (2006) Defensin- and cathepsin G-ANCA in systemic lupus erythematosus. *Rheumatol. Int.* **27**:147-52
 Khanna D. et al. (2003) Bactericidal/permeability-increasing protein and cathepsin G are the major antigenic targets of antineutrophil cytoplasmic autoantibodies in systemic sclerosis. *J. Rheumatol.* **30**:1248-52
 Halbwachs-Mecarelli L. et al. (1992) Antineutrophil cytoplasmic antibodies (ANCA) directed against cathepsin G in ulcerative colitis, Crohn's disease and primary sclerosing cholangitis. *Clin. Exp. Immunol.* **90**:79-84
 Kuwana T. et al. (2000) Anti-cathepsin G antibodies in the sera of patients with ulcerative colitis. *J. Gastroenterol.* **35**:682-9
 Yahya T.M. et al. (1997) Anti-neutrophil cytoplasmic antibody (ANCA) in malaria is directed against cathepsin G. *Clin. Exp. Immunol.* **110**:41-4

Ordering information

| | | |
|----------|--------------------------------------|---------|
| ATC01-02 | Cathepsin G (from human neutrophils) | 0.20 mg |
| ATC01-10 | Cathepsin G (from human neutrophils) | 1.0 mg |