

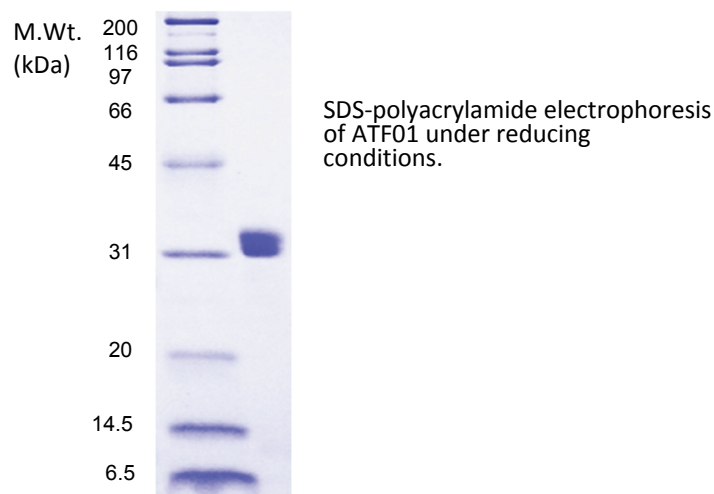
Product datasheet:

Rheumatoid Factor Antigen

Overview

Product name:	Rheumatoid factor antigen
Description:	Fc fragment from papain-digested human IgG (heavy chain dimer)
Source material:	Human plasma
Purity:	>90% (by SDS-electrophoresis)
Purification:	Purified using conventional chromatography procedures
Clinical applications:	Detection of rheumatoid factors in patient sera

Images



References

- Laurent L. *et al.* (2015) *Ann Rheum Dis.* 74(7):1425-31
- Jin H. *et al.* (2014) *Proc Natl Acad Sci.* 111(10):3787-92
- Rombouts *et al.* (2015) *Ann Rheum Dis.* 74(1):234-41
- Ehlers M. (2012) *Z Rheumatol.* 71(9):798-800
- Kanmert D. *et al.* (2012) *Scand J Immunol.* 75(1):115-9
- Choi HJ. *et al.* (2015) *Mol Immunol.* 65(2):377-83
- Rayner LE. *et al.* (2015) *J Biol. Chem.* 290(13):8420-38
- Lu J. *et al.* (2015) *Proc Natl Acad Sci.* 112(3):833-8
- Duquerroy S. *et al.* (2007) *J Mol Biol.* 368(5):1321-31
- Saphire EO. *et al.* (2003) *Adv Exp Med Biol.* 535:55-66
- Sondermann P. & Oosthuizen V. (2002) *Biochem Soc Trans.* 30(4):481-6
- Sondermann P. & Oosthuizen V. (2002) *Immunol Lett.* 82(1-2):51-6
- Falkenburg WJ. *et al.* (2015) *Arthritis Rheumatol.* 67(12):3124-34
- Anquetil F. *et al.* (2015) *J Immunol.* 194(8):3664-74
- Holm BE. *et al.* (2015) *Scand J Clin Lab Invest.* 75(1):51-63
- Beduleva L. *et al.* (2015) *Int J Rheum Dis.* 18(4):408-20
- Brown P. *et al.* (1982) *Arthritis Rheum.* 25: 1101-1107
- Borretzen M. *et al.* (1996) *Autoantibodies* 706-715
- Winska W.H. *et al.* (1988) *Scand J Rheumatol. Suppl.* 75:238-243
- Espersen G.T. *et al.* (1988) *Scand J Rheumatol. Suppl.* 75:40-45
- Pope R.M. (1996) *Am J Med.* 100:3S-9S

Ordering information

ATF01-10

Rheumatoid Factor Antigen (Human)

1.0 mg

AROTEC_RfAntigen_Datasheet A/10.11.16